

Friends of Hays Woods

Task Force Presentation

12 September 2018

Kate St. John

Photo Thanks To

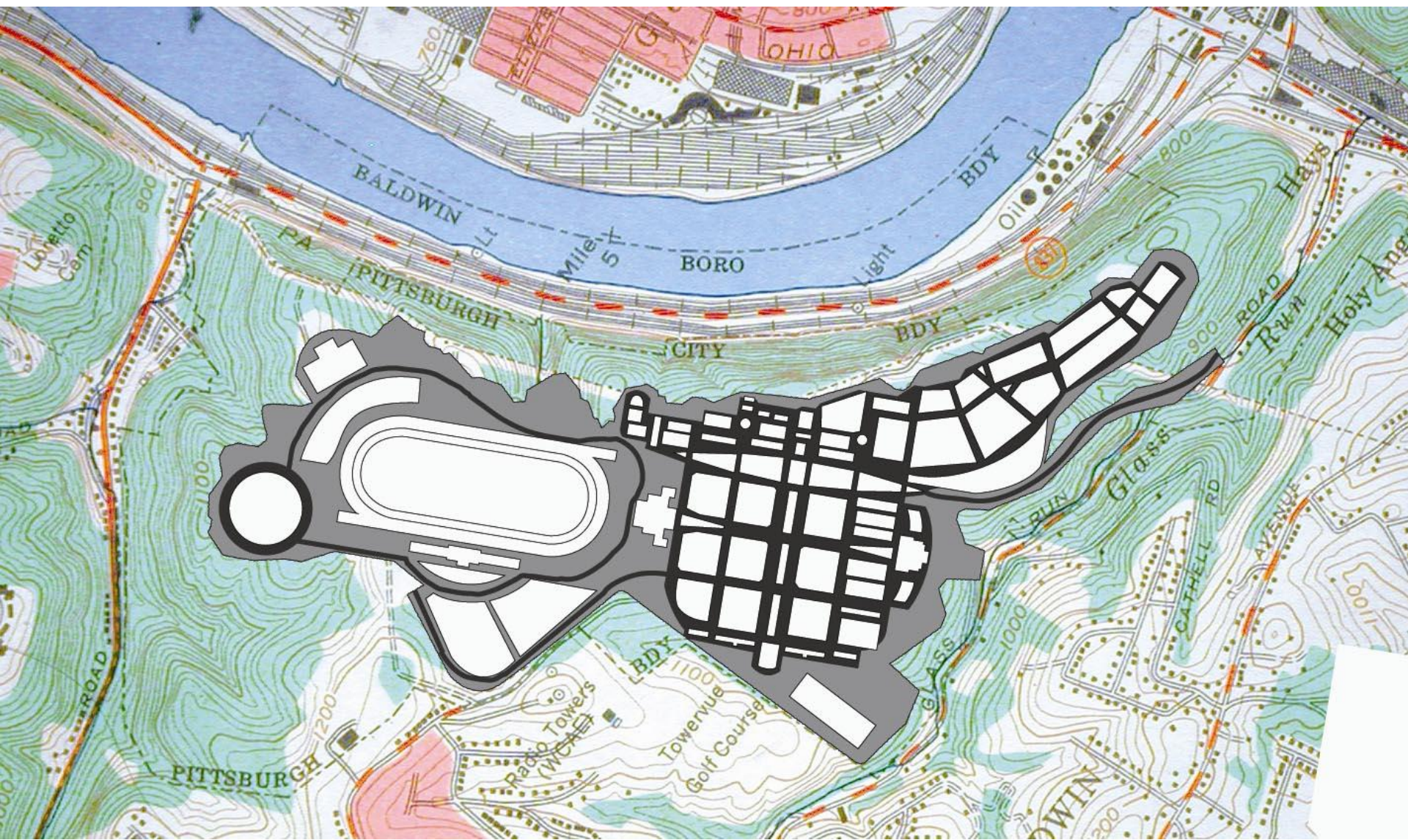
- Allegheny Land Trust / Western PA Conservancy Ecological Assessment
- Dana Nesiti, Eagles of Hays PA



















PUBLIC VOICES PRIVATE DEVELOPMENT

CREATING ALTERNATIVE VISIONS OF THE HAYS HILLSIDE















An Ecological and Physical Investigation of Pittsburgh's Hillsides

ECOLOGICAL REPORT

Prepared in cooperation with Allegheny Land Trust for the City of Pittsburgh Hillsides Committee

August 31, 2004



**Permit
Denied**



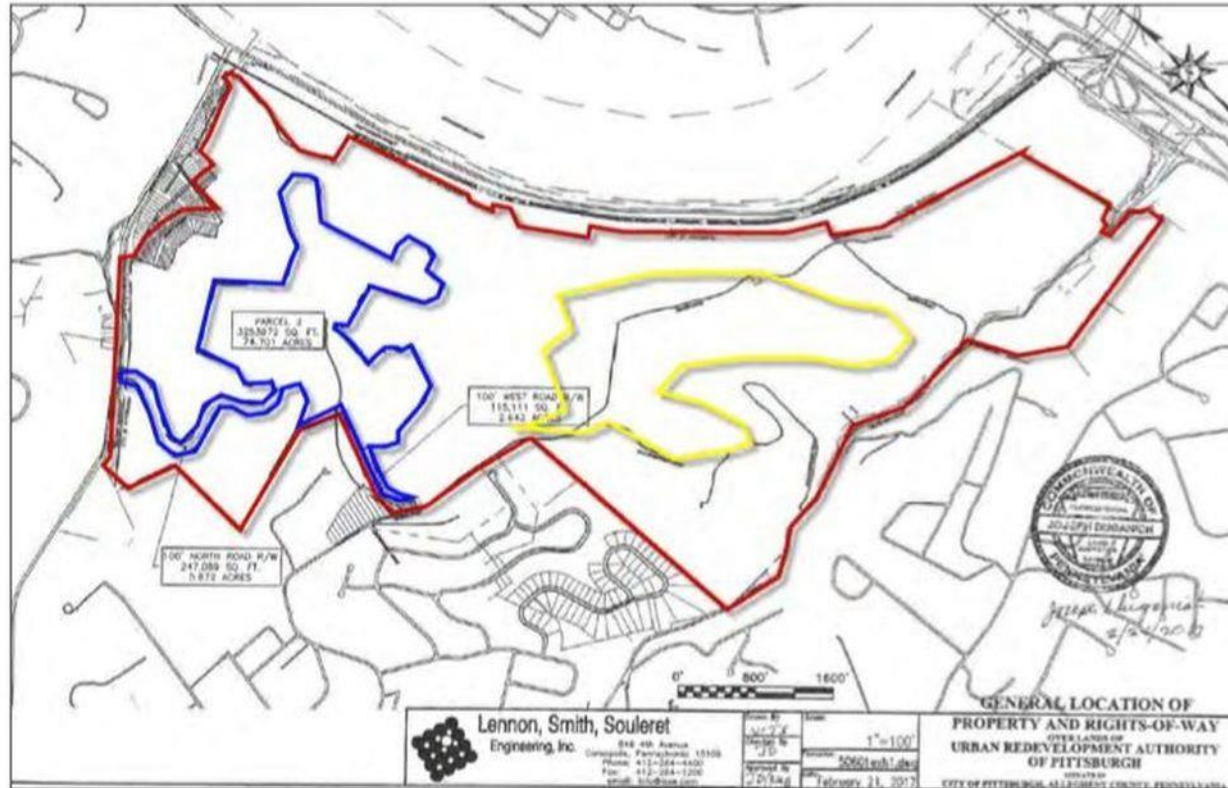
© Eagles of Hays Pa 2-10-2018
www.facebook.com/eaglesofhayspa





CAUTION!
THREE RIVERS HERITAGE TRAIL
EAGLE
VIEWING AREA

Site Plan



The area outlined in red is the entire lot. The area outlined in blue is not included in this appraisal and is projected to be used for potential residential development. The area outlined in yellow is the land which is deemed to be developable based on access and topography characteristics. The remaining land is characterized by poor to fair access and moderate to steeply sloping topography.





ALLEGHENY

PITTSBURGH

BIRMINGHAM

PITTSBURGH, ALLEGHENY & BIRMINGHAM.

1871.















Beck's Run

Monongahela River

Glass Run

Street's Run









People love Hays Woods for ...









Eagles of Hays Pa



© Robert Green Jr.





Hidden Benefits ...

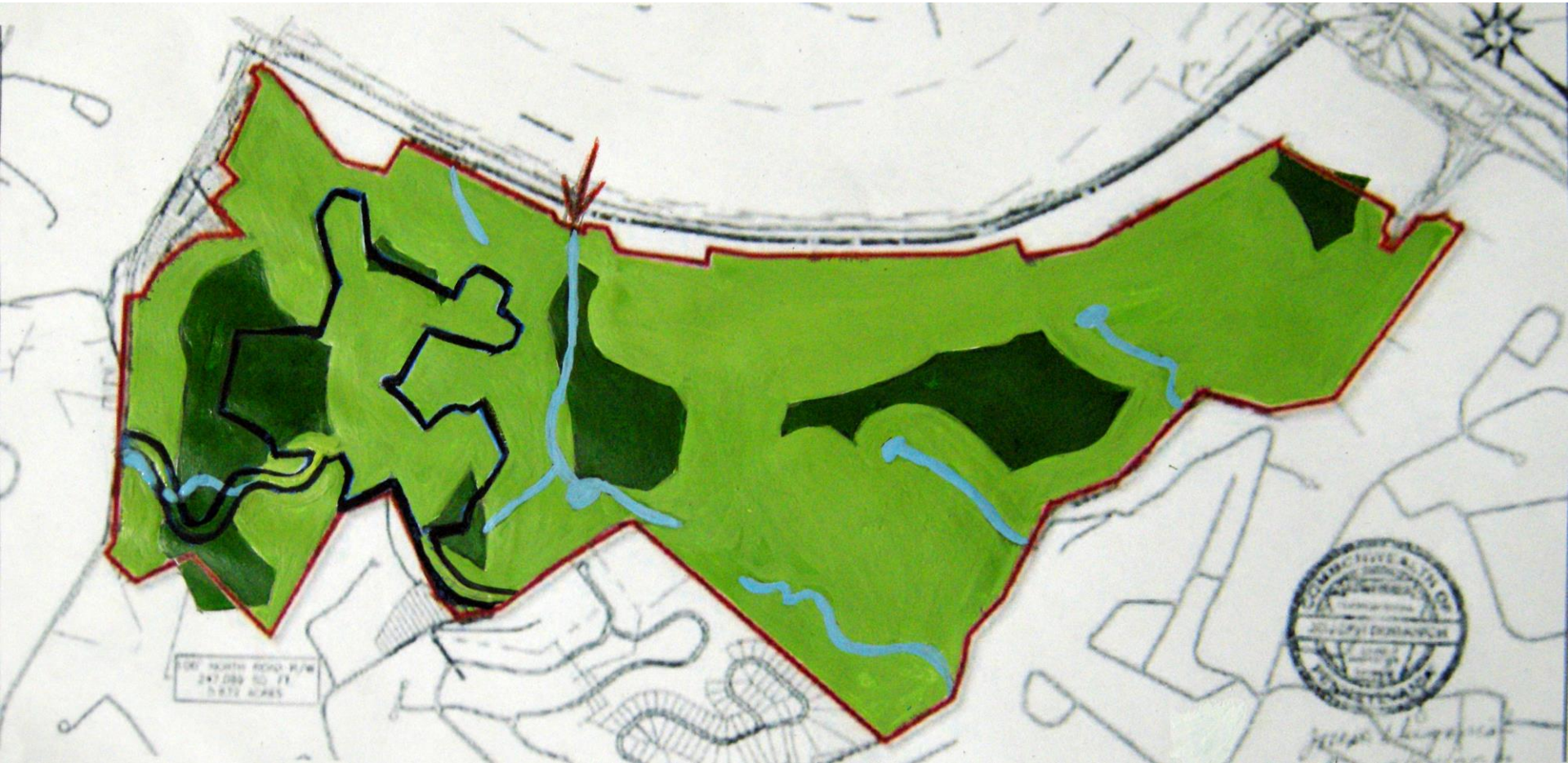


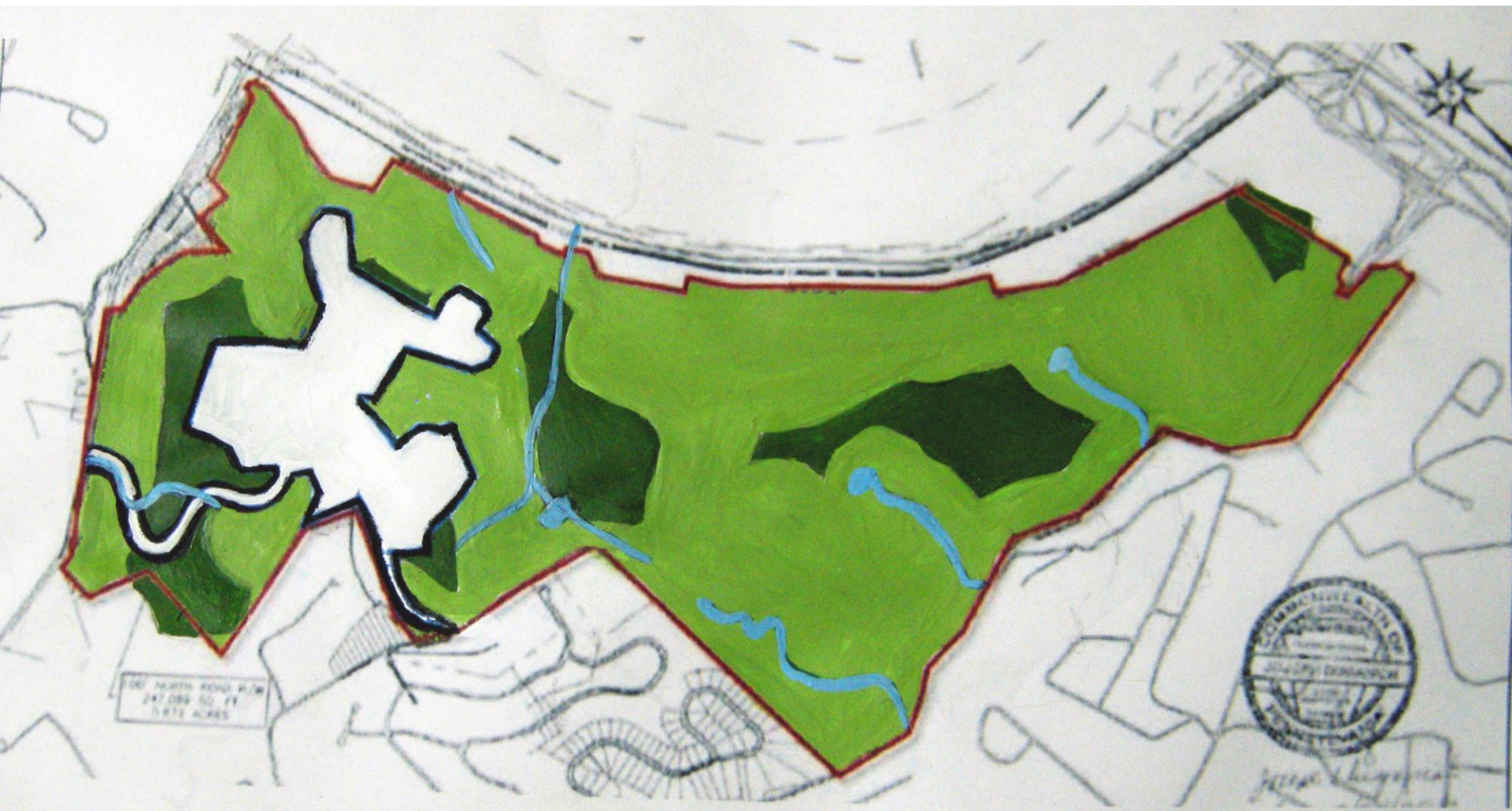




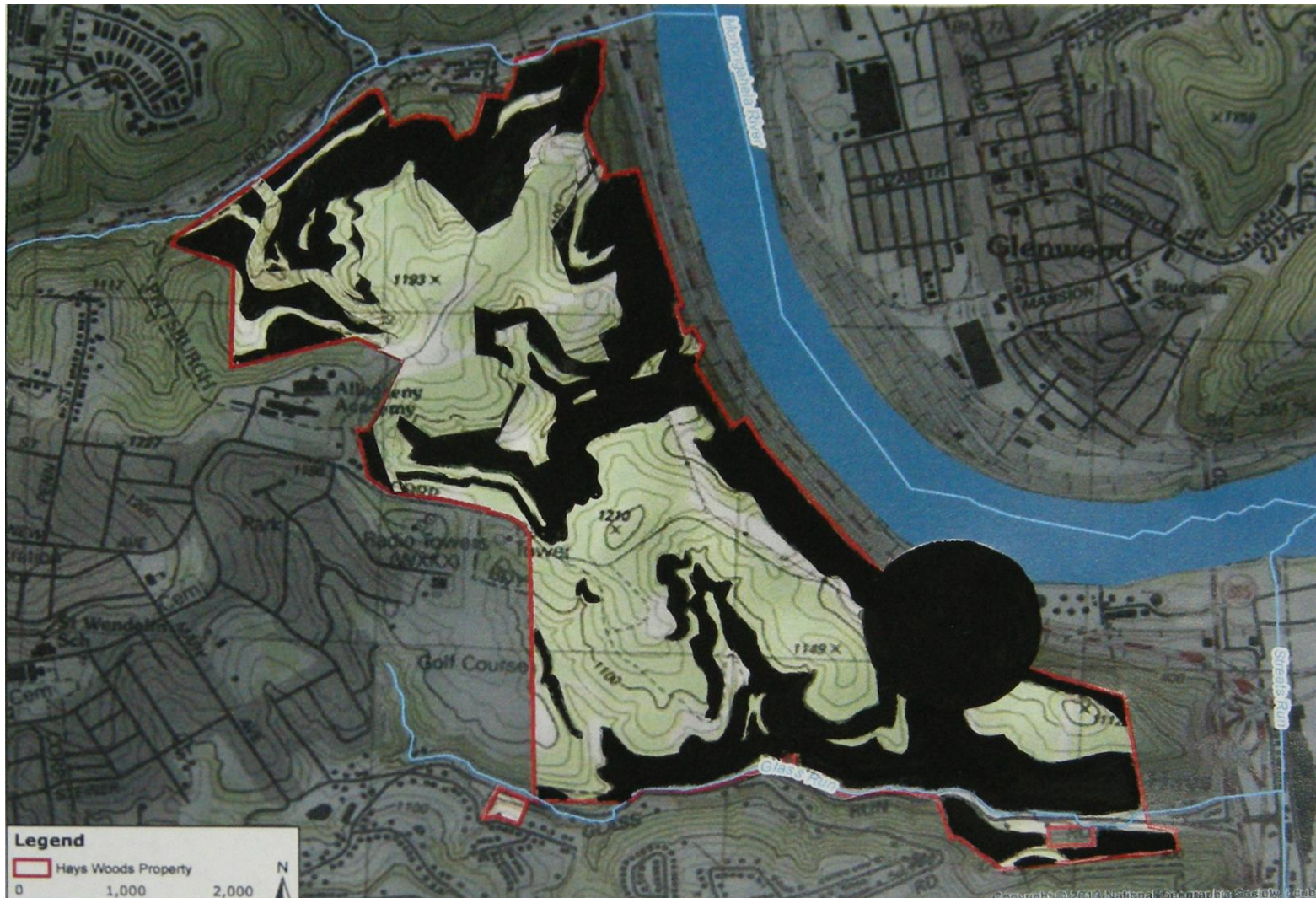
How do we retain
the things that make
Hays Woods special?

Can we avoid fragmentation?

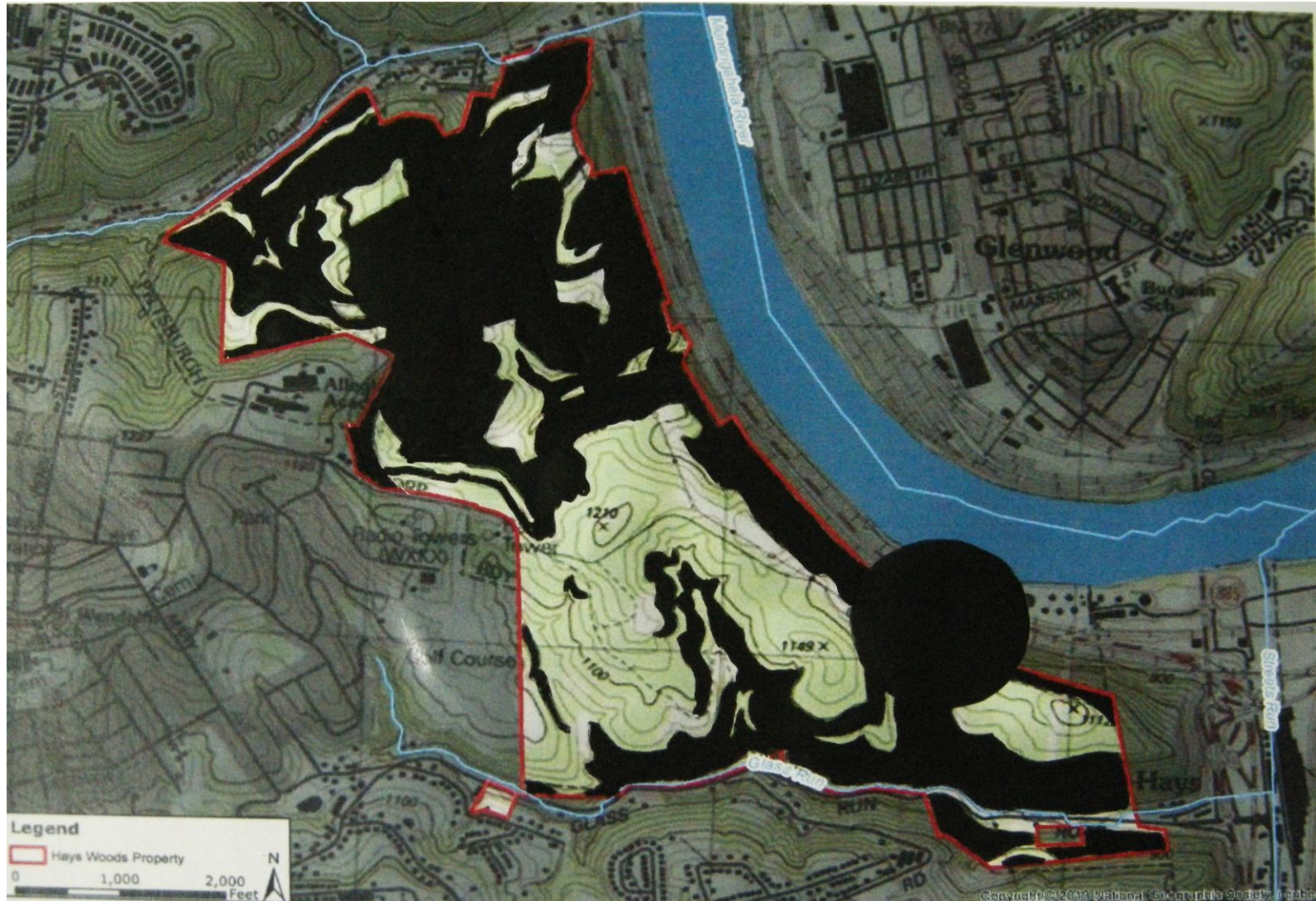




Can we keep the walkable places and overlooks?



what remains if housing is built



Can it still look wild from across the river?

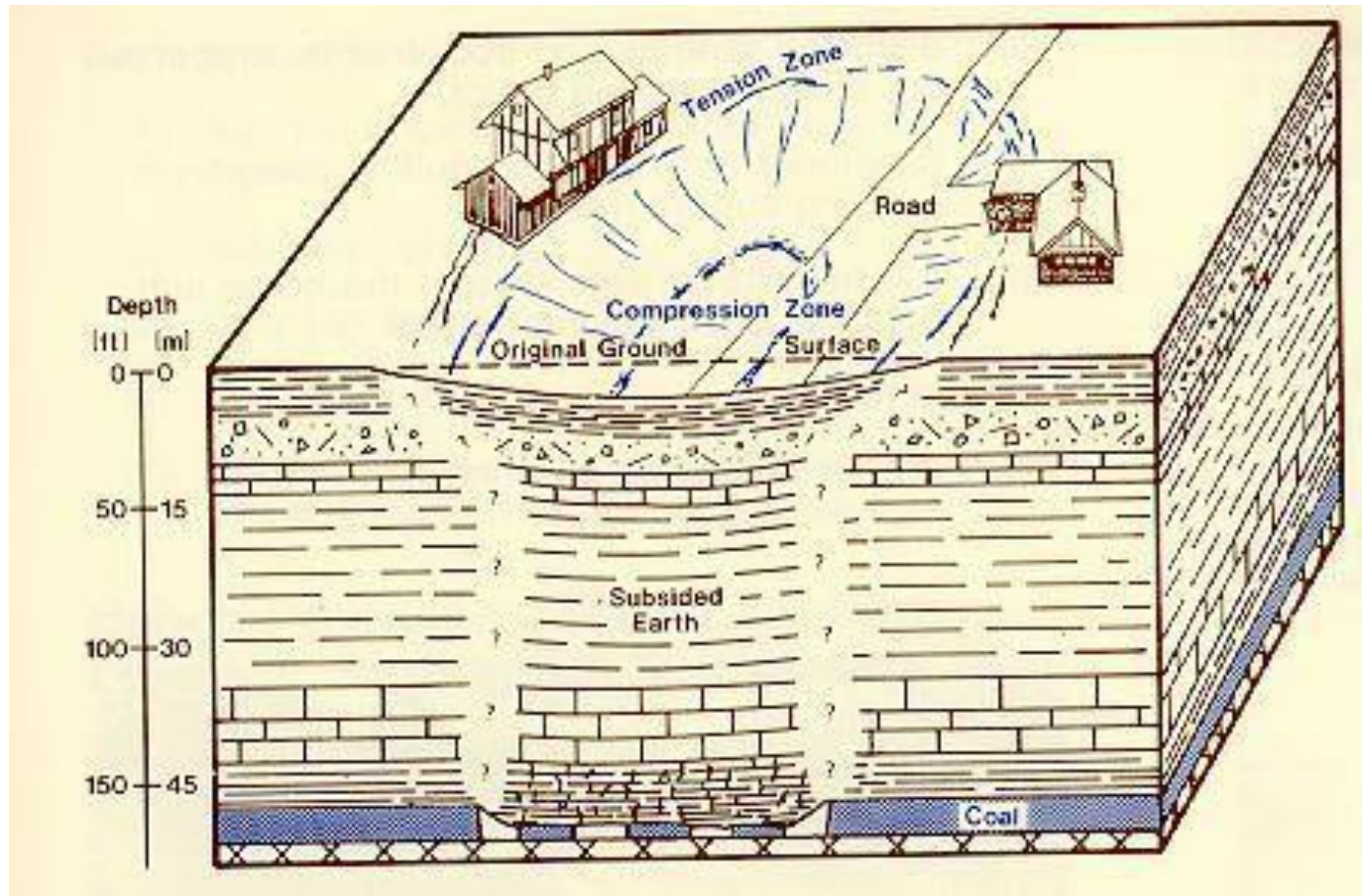


Hays Woods



Mt. Washington

Is it feasible to build there?









Thank you